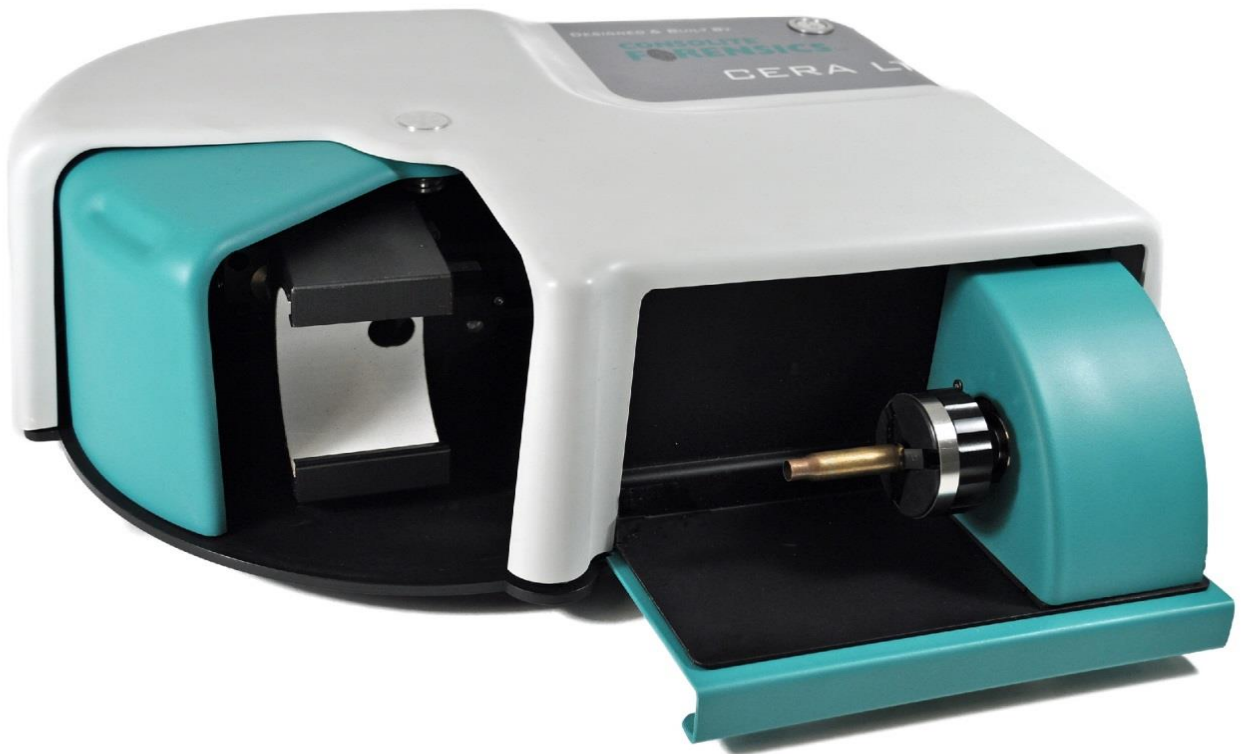


# CONSOLITE<sup>®</sup> F<sup>OR</sup> FINGERPRINTS<sup>®</sup> FORENSICS Ltd

## CERA<sup>™</sup> LT

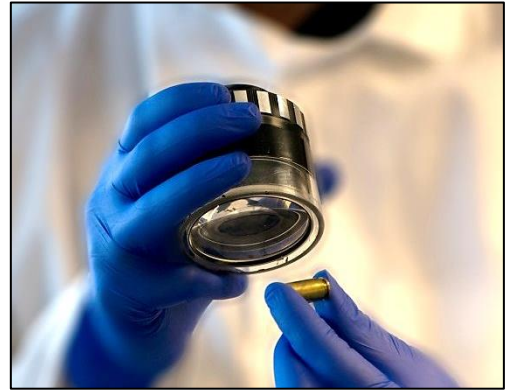


A NEW OPTICAL SYSTEM TO RECOVER  
FINGERPRINTS FROM GUN CARTRIDGES AND  
OTHER CYLINDRICAL ITEMS

[WWW.CONSOLITE.CO.UK](http://WWW.CONSOLITE.CO.UK)

Cartridge casings have long been gathered at crime scenes however, it is rare to find fingerprints as any deposits are usually destroyed when the weapon is fired.

Some casings though, may have some corrosion left by fingerprint sweat which can be viewed under the correct light and magnification.



Through extensive research and development of the revolutionary CERA, Consolite Forensics has been able to produce a new optical system without the use of a complex powder and high voltage system, yet still capable of enhancing and capturing even the most difficult prints from a curved surface.

*“The electrostatic process has always relied on the presence of particular corrosion products to successfully enhance fingerprint corrosion and has provided a compliment to optical methods. Now, the CERA LT optical system provides superior imaging of the surface of the cartridge, including any corrosion, so as to remove the need for the electrostatic process”.* Dr John W Bond OBE

The new compact CERA LT achieves this purely through its advanced optical system and simple to use software called CFIS.

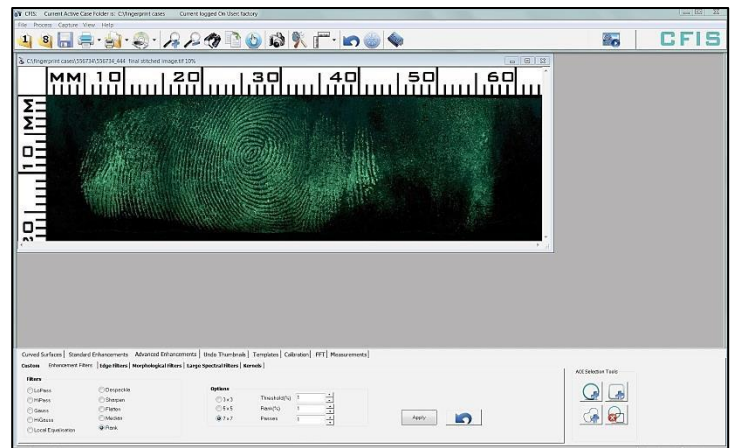
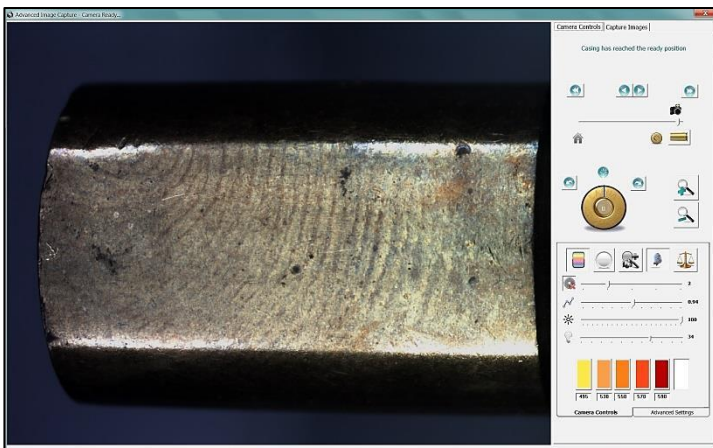
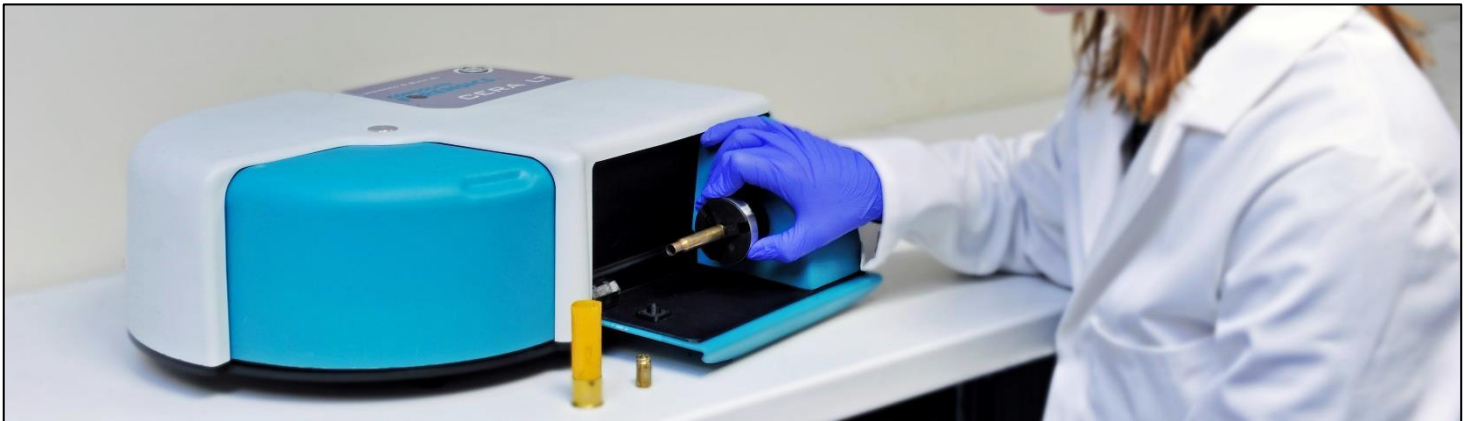
New features include the ability to capture and compare ballistic information from the breech face of a cartridge. The new holding system allows a full range of cartridges to be inspected for firing pin impressions and also ejector marks.



## THE PROCESS:

The operation of CERA LT has been designed to be quick and easy with minimal training and expertise.

1. Place your cartridge in the soft jaw holding system
2. Illuminate the cartridge for live view
3. Adjust lighting parameters to reveal and enhance print
4. Photograph the circumference in one click
5. Automatically stitch the images using pre-sets
6. Digitally enhance the image
7. Add a detailed scale to any image
8. Output to 1:1 printing or AFIS/IDENT
9. Automatically creates fully traceable audit trail with authentication of original image



## **ADVANTAGES OF CERA LT:**

- Quick and simple to use
- Fingerprints extracted from cartridge cases & cylindrical objects such as screwdriver handles and syringes
- Cylindrical object holder 1mm - 25mm diameter
- Brush holding system for cartridge breech face examination
- Fully integrated high resolution camera
- Advanced 360° image processing
- Uniform LED cloud sky lighting system in white and 460nm blue
- Automated 6 position band pass filter wheel – 495nm, 530nm, 550nm, 570nm, 590nm
- Use of external alternate light sources
- No on-going consumables

## **SPECIFICATION:**

- Dimensions: 485 x 160 x 350mm (19" x 6" x 13")
- Weight: 8 Kgs (17 lbs)
- Voltage: 96-264 Volts ac
- Provided with dedicated computer and monitor
- Consolite Forensics Imaging Software (CFIS)

## **AFTER SALES SUPPORT:**

Advice and a range of training packages are available from the Consolite Forensics Support Team.



CONSOLITE FORENSICS LTD.,  
ST. MARTINS BUSINESS PARK,  
BELLS LANE, ZEALS,  
WILTSHIRE, BA12 6LY, UK

TEL: +44(0) 1747 840900  
FAX: +44(0) 1747 841500  
E-MAIL: [SALES@CONSOLITE.CO.UK](mailto:SALES@CONSOLITE.CO.UK)  
ISO9001:2008 ACCREDITED